

**FORA<sup>®</sup> Test N' GO Advance Voice**  
 Total Cholesterol Test System  
 Sistema de medición del colesterol total

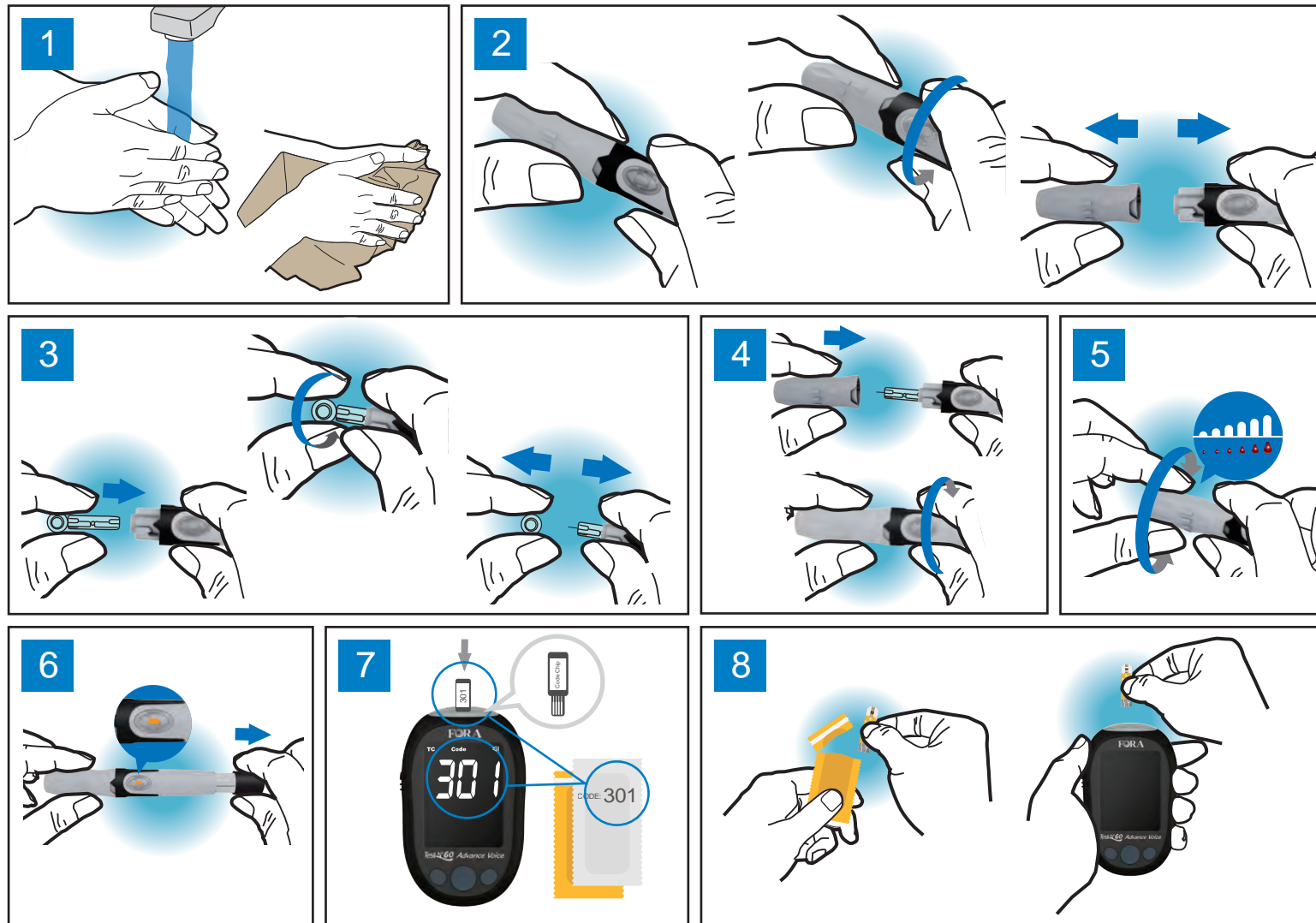


**Quick Start User Guide / Guía de Referencia**

For self-testing. Read instructions before use. For *In vitro* diagnostic use. For single patient use only.  
**For over the counter use only.**  
 Para autoanálisis. Lea las instrucciones antes de utilizarse. Para uso diagnóstico *in vitro*. Para uso de una sola persona. Solo para uso sin receta.

Distributed by Foracare, Inc. / Distribuido por Foracare, Inc.  
 893 Patriot Drive Suite D, Moorpark, CA 93021 USA  
 Products made in Taiwan / Productos hechos en Taiwán  
 Toll Free / Número de Teléfono Gratuito : 1-888-307-8188 (6:30 am-5:30 pm PST, Monday to Friday / 6:30 am-5:30 pm PST, Lunes a Viernes)  
 For assistance outside of these hours, please contact your healthcare professional. / Para obtener asistencia fuera de estos horarios, póngase en contacto con un profesional de la salud.  
 www.foracare.com

315-4183600-012



PLACE  
 STAMP HERE  
 COLOQUE  
 ESTAMPILLA  
 AQUI

**Foracare, Inc.**

893 Patriot Drive Suite D  
 Moorpark, CA 93021 USA



# FORA® Five Years Warranty Registration Card / Tarjeta de Registro de Garantía por 5 años

To save a stamp and receive potential online promotions, please visit <https://foracare.com/support/> to complete your product registration.

Name / Nombre \_\_\_\_\_

E-mail / Correo Electronico \_\_\_\_\_

Street Address / Dirección \_\_\_\_\_

APT# \_\_\_\_\_

City / Ciudad \_\_\_\_\_

Country / País \_\_\_\_\_

State / Estado \_\_\_\_\_

Zip / Código Postal \_\_\_\_\_

Home Telephone / Teléfono Casero \_\_\_\_\_

--	--	--	--	--	--	--	--	--	--	--	--	--	--	--	--	--	--	--	--

Meter Serial Number (See label on back of meter) /

Date of Purchase (Month-Day-Year) /

Número de Serie del Medidor (Ver etiqueta al reverso del medidor)

Fecha de Compra (Mes-Día-Año)

I acknowledge that ForACare has the right to contact me with updates, promotions, or meter upgrade offers / Reconozco que

ForACare tiene el derecho de contactarme con actualizaciones, promociones u ofertas de mejores medidores

**ForACare, Inc.** Online Warranty Registration and Detailed Warranty Coverage at [www.foracare.com/support.html](http://www.foracare.com/support.html)

**13**

The image shows a sequence of three FORA meters. The first meter displays the number '59'. An arrow points to a circular icon with a clock face and '60"', representing a 60-second wait time. A second arrow points to a second FORA meter displaying '150 mg/dL'.

**9**

A hand holds a FORA meter with a test strip inserted. A large blue circular icon with a white drop and radiating lines is positioned above the test strip, indicating a blood drop.

**10**

Two hands are shown holding a white, rectangular alcohol pad.

Alcohol pads are not included in the test kit and should be purchased separately.

Las almohadillas con alcohol no están incluidas en el kit de prueba y deben comprarse por separado.

**11**

A hand holds a finger over a blue circular timer icon showing '30"'. An arrow points to a hand squeezing the test strip into the meter's opening.

Allow the site to air dry. (If alcohol pad is used.)  
Permita que el sitio de prueba se seque al aire.  
Especialmente si se usa una gasa de alcohol.

**12**

A FORA meter is shown with a test strip inserted into a finger. Two inset images show the correct and incorrect ways to insert the test strip. The top inset shows the strip correctly inserted with a checkmark. The bottom inset shows the strip incorrectly inserted with an 'X'.

**14**

A sequence of four illustrations showing the disposal of the test strip: 1. Dropping the strip into a trash can. 2. Peeling the strip away from the meter. 3. A close-up showing the strip being placed into a recycling bin. 4. The strip being placed into a recycling bin.

This device is NOT intended for use in healthcare or assisted-use settings such as hospitals, physician offices, or long-term care facilities. Use of this device on multiple patients may lead to transmission of Human Immunodeficiency Virus (HIV), Hepatitis C Virus (HCV), Hepatitis B Virus (HBV), or other bloodborne pathogens.